



MONTHLY MEMBERSHIP PROGRESS REPORT

District 410 A

Results as of: 03/31/2019

GMT: RASHMI KOOVERJEE

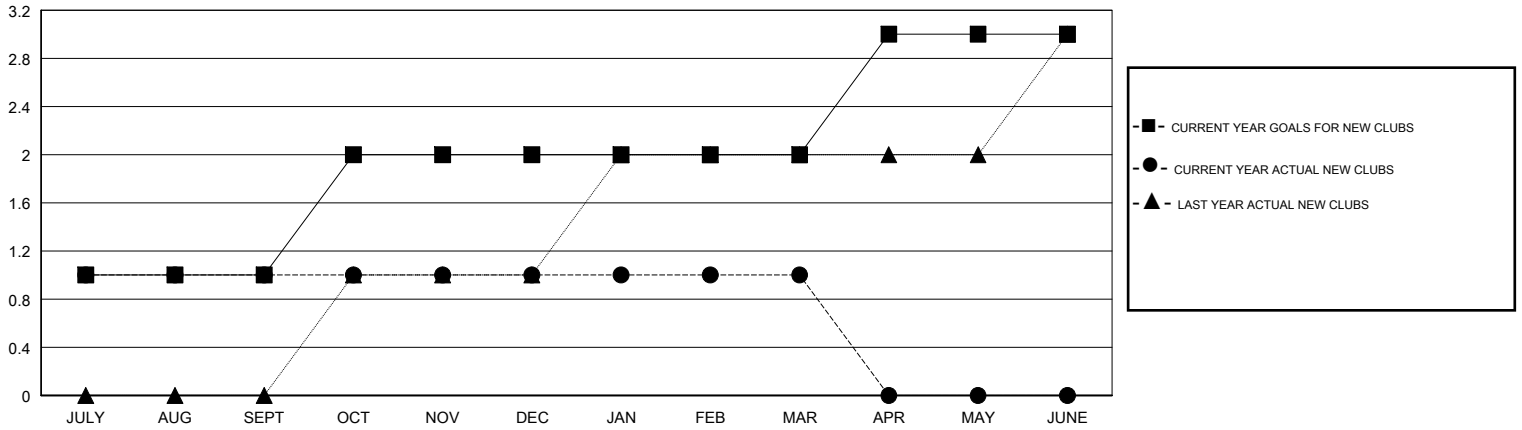
LOCATION REP OF SOUTH AFRICA

GMT CA

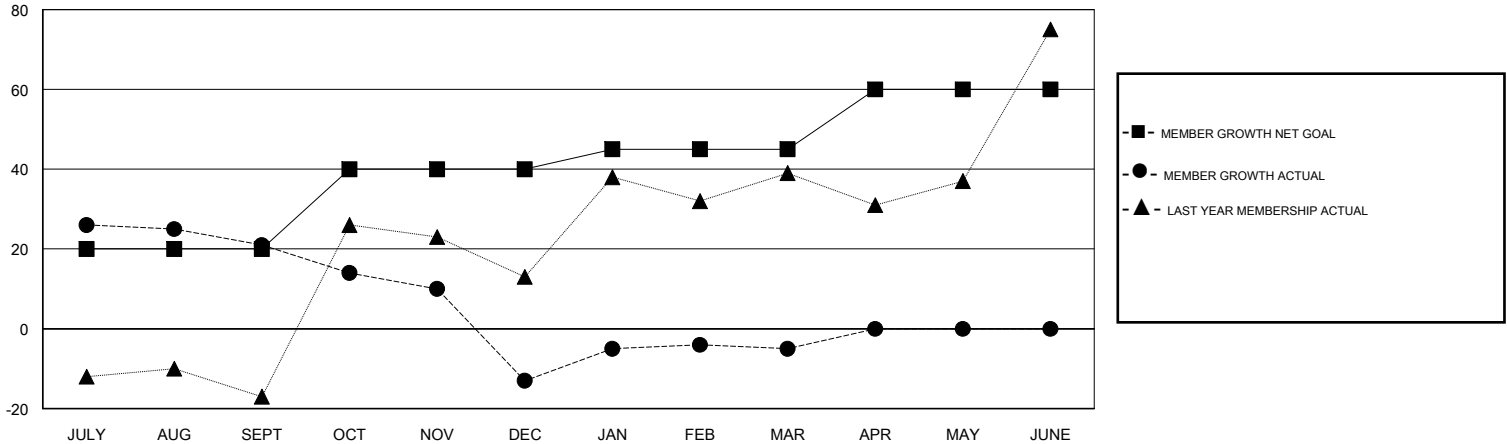
| Clubs | | | |
|-----------------------|---------------|-----------|---------------|
| RESULTS FOR 2018-2019 | | | |
| QUARTER | NEW CLUB GOAL | NEW CLUBS | DROPPED CLUBS |
| JULY/AUG/SEPT | 1 | 1 | 0 |
| OCT/NOV/DEC | 1 | 0 | 0 |
| JAN/FEB/MAR | 0 | 0 | 0 |
| APR/MAY/JUNE | 1 | 0 | 0 |

| Members | | | |
|-----------------------|------------------------|----------------------|--|
| RESULTS FOR 2018-2019 | | | |
| QUARTER | MEMBER GROWTH NET GOAL | MEMBER GROWTH ACTUAL | DROPPED MEMBERS ACTUAL (including transfers) |
| JULY/AUG/SEPT | 20 | 56 | 32 |
| OCT/NOV/DEC | 20 | 11 | 44 |
| JAN/FEB/MAR | 5 | 41 | 29 |
| APR/MAY/JUNE | 15 | 0 | 0 |

GOALS AND ACTUAL NEW CLUBS CUMULATIVE



GOALS AND ACTUAL MEMBERS CUMULATIVE



| | | |
|--|---|--|
| DROPPED CLUBS: 0 | 32 CLUBS OF 47 ADDED 1 OR MORE NEW MEMBERS | <u>GENDER DISTRIBUTION</u> MALE 531 (55.49%) FEMALE 426 (44.51%) Women Percentage Fiscal Year Goal: 42% |
| <u>DROPPED MEMBERS</u> DECEASED 5 CLUB CANCELLED 0 OTHER 100 TOTAL 105 | CLICK HERE FOR CUMULATIVE MEMBERSHIP DATA | TOTAL FAMILY UNIT MEMBERS 252 FAMILY MEMBERS PAYING HALF DUES 130 |